



CYPRUS Industrial Minerals

AUGUST 200

DESCRIPTION

August 200 is a 200 mesh premium grade cosmetic talc made from carefully selected Australian crude.

This product excels in applications requiring a high brightness platy cosmetic talc.

August 200 is certified to contain no detectible asbestiform minerals as determined by CTFA method J4-1.

APPLICATIONS IN COSMETICS

Creams and Lotions
Dusting Powders

TYPICAL PHYSICAL PROPERTIES

GEB Brightness (CSTM 14)	90
Green Filter Brightness (Hunter X)	91
Oil Absorption (ASTM D281)	36
Specific Gravity (ASTM 153-82)	2.8
Loose Density, lbs./ft ³ (CTFA C3-1)	26
Tapped Density, lbs./ft ³ (CTFA C7-1)	62
Median P.S., microns (CSTM-02)	10.7
Surface Area, m ² /gm (BET N)	4.6
pH, 10% slurry (CSTM-5)	9
Acid Solubles (USPXXI), % max.	2

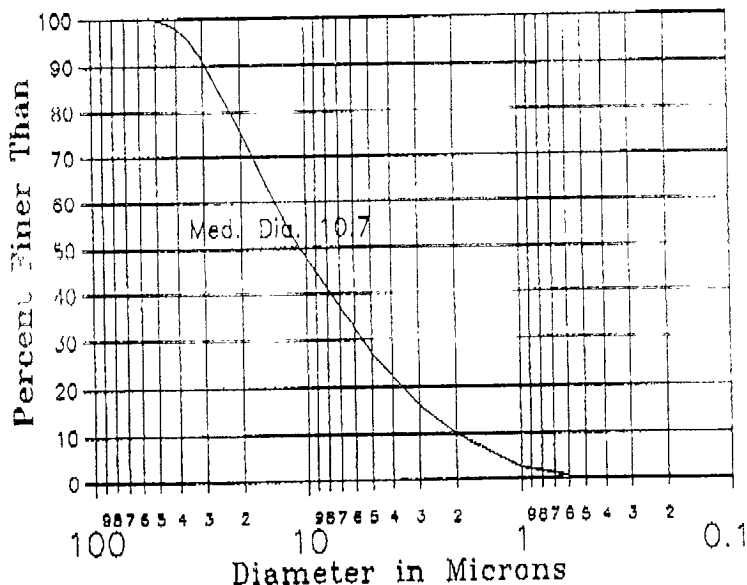
TYPICAL MINERAL ANALYSIS BY XRD

MgO	29.6%	SiO ₂	62.2%	Fe ₂ O ₃	.74%
Al ₂ O ₃	.53%	CaO	.59%	Na ₂ O	.03%
K ₂ O	<.012	TiO ₂	<.02		
L.O.I.	4.8% (CTFA E36-1)				
Lead	< 5ppm	Arsenic	< 5ppm		
Heavy Metals	< 20ppm	Iron	< 500ppm (extractable)		

MICROBIOLOGICAL ANALYSIS

Total aerobic plate count (incl. yeast and mold)
< 100 per gm. (CSTM 34)
Gram negative plate count, not detected (CSTM 34)

TYPICAL PARTICLE SIZE
Analyzed on a Micromeretics Sedigraph 5000



The data presented are based on tests that Cyprus believes to be reliable and are offered in good faith as typical of normal production, but Cyprus makes no warranty or representation of any kind, express or implied, regarding the information given or the product described, including any warranty of suitability for a particular purpose. The user is solely responsible for its use of the information and product. Cyprus disclaims any liability based on any claim of patent infringement.

Customer Service Department
Englewood, Colorado
Call: (800) 525-8252

For technical information and sales assistance
Call (800) 325-0299

DS-1-24-81



CYPRUS
Industrial Minerals

SHIPPED TO:

MANUFACTURED BY / SHIPPED FROM:

CYPRUS INDUSTRIAL MINERALS
CYPRUS DRIVE E. HWY 30
GRAND ISLAND, NE 68801
308/382-4877

QUALITY CONTROL REPORT

AUGUST 200

PRODUCT LOT NO. G061281

CUSTOMER P.O. NO. _____

C.I.M PRODUCT CODE 1905

CUSTOMER CODE NO. _____

C.I.M. ORDER NO. Sample

QUANTITY SHIPPED _____

TEST RESULTS

PROPERTY	RESULT	SPECIFICATION	TEST METHOD
Screen @ 200 Mesh	<u>99.9</u>	99.0% MIN.	CSTM 09
Bulk Density	<u>27.1</u>	24 -28.0lb/in ³	CSTM 12
Brightness(MgO=100)	<u>86.9</u>	84 MIN.	CSTM 14
Microbiology			
Total count	_____ CFU/gm	100 MAX.	CSTM 28
Gram negative	_____	Fun. Sterile	CSTM 28
Yeast/Mold	_____	<10	CSTM 28
No Visible Contamination	_____	PASS	VISUAL

THIS PRODUCT CONTAINS NO DETECTABLE QUANTITIES OF ASBESTIFORM MINERALS WHEN TESTED BY TEST METHOD CTFA J4-1.

QUALITY CONTROL



MATERIAL SAFETY DATA SHEET

Cyprus Industrial Minerals Co.
 9100 East Mineral Circle
 Englewood, CO 80112
 (303) 643-5000
 Product Information

Date Issued:
 March 1, 1990

Page 1 of 5

Issued By:
 G. J. Gill

Code 29 CFR

EMERGENCY
 Rocky Mountain Poison Control Center (24 hours) - (303) 623-5716

SECTION I - IDENTIFICATION OF MATERIAL

CHEMICAL NAME OR COMPOSITION:	HAZARD RATING	
Talc: Hydrous Magnesium Silicate	PER H.M.I.S. OF N.P.C.A.	
3MgO:4SiO ₂ :H ₂ O		1
PRODUCT NAME:	FLAMMABILITY	0
August 200, 325, 400	REACTIVITY	0
	PERSONAL PROTECTION	E
	* AVOID MASSIVE INHALATION	

CHEMICAL FAMILY: Silicates
DESCRIPTION: A white, finely ground, natural mineral powder that exhibits a characteristic "slippery" feel when rubbed between the fingers.

SECTION II - INGREDIENTS

MINERAL OR CHEMICAL	WEIGHT%	ACGIH TLV ⁽¹⁾	OSHA PEL ⁽²⁾	CAS#
Talc	>99	2mg/M ³	20Mppcf	14807-96-6
Quartz	<1.0	0.1mg/M ³	30mg/M ³ /SiO ₂ +2	14808-80-7
Respirable Quartz	<0.1%			

(1) Respirable Dust - TWA - 8 hour shift/40 hour work week (2) Total Dust - TWA - 8 hour shift/40 hour work week

Date Issued
September 1, 1990

Page 2 of 5

SECTION III- PHYSICAL DATA

BOILING POINT	FREEZING POINT	EVAPORATION RATE	% VOLATILE
Not Applicable	Not Applicable	Not Applicable	Slight
VAPOR DENSITY	VAPOR PRESSURE	SPECIFIC GRAVITY	PH
None	None	2.7-2.8	(5% slurry): 8.0-9.5
% SOLUBLE IN WATER	ODOR	APPEARANCE	
Negligible	Slight Earthy Odor	White powder with a "slippery" feel	

SECTION IV- EMERGENCY FIRST AID PROCEDURES

EYE CONTACT: For direct contact, flush the affected eye(s) with clean water while holding the eyelids open. If irritation or redness develops, seek medical attention.

SKIN CONTACT: Usually of no general concern. Broken skin can be cleansed with mild soap and water. If irritation or redness develops and persists, seek medical attention.

INHALATION (BREATHING): Primary route of entry. If irritation of nose or throat develops, move away from source of exposure and into fresh air. If irritation persists, seek medical attention. If victim is not breathing or breathing difficulties develop, artificial respiration or oxygen should be administered by qualified personnel. Seek immediate medical attention.

INGESTION (SWALLOWING): No treatment necessary.

SECTION V- POTENTIAL ADVERSE EFFECTS

EYE CONTACT: As with most dusts or particulate materials, talc can cause temporary discomfort and irritation if accidentally introduced into the eye.

SKIN CONTACT: No adverse effects are known as a consequence of application to unbroken skin.

INHALATION (BREATHING): Primary route of entry. Symptoms of acute accidental exposure would be non-specific and similar to the inhalation of any dust. Such symptoms might include paroxysmal coughing, wheezing, difficult breathing, and upper respiratory tract irritation.

INGESTION (SWALLOWING): No adverse effects expected.

EFFECTS OF REPEATED OVEREXPOSURE: There are indications that a relatively mild pneumoconiosis can develop over 10-40 years of occupational exposure as with any nuisance dust. Smoking and concomitant disease might impose an additional pulmonary burden which may alter the course of the pneumoconiosis.

NOTES TO PHYSICIAN: There are no specific antidotes to acute overexposure. Treatment should be directed at the control of the symptoms and clinical condition. Individuals as with active pulmonary disease should not be assigned to a heavy talc dust environment. Refer to Section IX for additional information.

CARCINOGENITY: Talc is not listed as a carcinogen by NTP; not regulated as a carcinogen by OSHA; not listed by the IARC.

Date Issued
September 1, 1990

Page 3 of 5

SECTION VI- SPECIAL PROTECTION INFORMATION

VENTILATION: If current ventilation practices are not adequate in maintaining airborne concentrations of talc below the TLV, additional ventilation or local exhaust systems may be required.

RESPIRATORY PROTECTION: Avoid prolonged or repeated inhalation of dust. Use a NIOSH approved respirator as required to prevent overexposure.

PROTECTIVE GLOVES: Generally not required, but recommended for workers who suffer from dermatitis or are susceptible to irritation and dry skin.

EYE PROTECTION: Safety glasses are the minimum eye protection; goggles should be worn when working in areas of potentially high dust concentrations.

OTHER PROTECTIVE EQUIPMENT: Eye wash stations or a source of clean water should be available in work area for flushing eyes.

SECTION VII- REACTIVITY DATA

STABILITY	HAZARDOUS POLYMERIZATION	INCOMPATIBILITY
Talc is stable	Will not occur	None
HAZARDOUS DECOMPOSITION PRODUCTS	CONDITIONS TO AVOID	
None	None	

SECTION VIII- FIRE AND EXPLOSION HAZARD DATA

FLASH POINT	FLAMMABILITY LIMITS	EXTINGUISHING MEDIA
None	None	None required
FIRE AND EXPLOSION HAZARDS	FIRE FIGHTING PROCEDURES	
None	None Required	

SECTION IX- SPILL OR LEAK PROCEDURES

STEPS TO BE TAKEN IN CASE OF RELEASE OR SPILL: If clean and dry, shovel, vacuum, or sweep up and return to container for use. Otherwise, sweep or vacuum up for disposal. **CAUTION:** The use of water washdown is not recommended unless the spilled material is already wet. Wet material on a walking surface will be extremely slippery. Wet spills should be thoroughly flushed with water until non-slippery.

WASTE DISPOSAL METHOD: Dispose of in accordance with local, state, and federal regulations. This material is not a hazardous waste by RCRA criteria (40 CFR 261). Dry material can be landfilled; wet material sewered, if diluted enough that high viscosity or gels will not cause a blockage.

Date Issued:
March 1, 1990

Page 4 of 5

SECTION X - SPECIAL PRECAUTIONS

- Surfaces subject to spills or dusting with this product can become extremely slippery. Keep all floors, workstations, stairs and handrails clean and dry.
- Respirable dust levels should be monitored on a regularly scheduled basis.
- The American Industrial Hygiene Association suggests that periodic physical examinations be given to those employees who might be exposed to high talc concentrations or average concentrations that approach the TWA.

SECTION XI - TRANSPORTATION REQUIREMENTS

- Department of Transportation classification: not hazardous by DOT regulations.
- DOT proper shipping name: not regulated.

SECTION XII - SARA 313 - SUPPLIER NOTIFICATION

- This product contains no known toxic chemicals subject to the reporting requirements of section 313 of the Emergency Planning and Community Right-to-Know Act of 1986 and of 40 CFR 372.

SECTION XIII - STATE RIGHT-TO-KNOW LAWS

- No substances on the state hazardous substances list, for the states indicated below are used in the manufacture of products on the Material Safety Data Sheet with the exceptions indicated. While we do not specifically analyze these products, or the raw materials used in their manufacture, for substances on various state hazardous substances lists, to the best of our knowledge the products on this Material Safety Data Sheet contain no such substances except for those specifically listed below.

SUBSTANCES ON THE PENNSYLVANIA ENVIRONMENTAL HAZARD SUBSTANCE LIST PRESENT AT A CONCENTRATION OF 1% OR MORE: None known.

SUBSTANCES ON THE PENNSYLVANIA SPECIAL HAZARDOUS SUBSTANCES LIST PRESENT AT A CONCENTRATION OF 0.01% OR MORE: None known.

NONHAZARDOUS INGREDIENTS PRESENT AT A CONCENTRATION OF 3% OR MORE REQUIRED TO BE LISTED BY PENNSYLVANIA: Talc, p. 323-29 (Dec 86 list).

WARNING: SUBSTANCES KNOWN TO THE STATE OF CALIFORNIA TO CAUSE CANCER: None known.

WARNING: SUBSTANCES KNOWN TO THE STATE OF CALIFORNIA TO CAUSE BIRTH DEFECTS OR OTHER REPRODUCTIVE HARM: None known.

SUBSTANCES ON THE NEW JERSEY WORKPLACE HAZARDOUS SUBSTANCES LIST PRESENT AT A CONCENTRATION OF 1% OR MORE (0.1% FOR SUBSTANCES IDENTIFIED AS CARCINOGENS, MUTAGENS OR TERATOGENS): Talc, p. 119, Silica, Quartz, p. 113.

Date Issued:
March 1, 1990

Page 5 of 5

SECTION XIV - ADDITIONAL INFORMATION

- All ingredients are on the TSCA Chemical Substance Inventory.
- This product does not contain quantifiable concentrations of asbestos, asbestiform or non-asbestiform tremolite, actinolite, anthophyllite by CTFA METHOD J4-1 or known or suspected carcinogens (sensitivity of 0.1% by weight).
- Sources used in the preparation of this MSDS include: The American Industrial Hygiene Association Hygienic Guide Series on Talc; The American Conference of Governmental Industrial Hygienists TLV and Biological Exposure Indices for 1988-89; Sax's Dangerous Properties of Industrial Materials; Department of Labor - OSHA-29 CFR, Part 1910 (1-19-89); Occupational Health Services, MSDS Services; New Jersey Worker and Community Right-to-Know Act; California Safe Drinking Water and Toxic Enforcement Act of 1986 (Proposition 65); Pennsylvania Code 34

The Information contained herein is based on data available to us and is believed to be correct. However, Cyprus makes no warranty, expressed or implied, regarding the accuracy or completeness of this information or the results to be obtained from the use thereof.

DATE PREPARED:

Gordon J. Gill
Cyprus Industrial Minerals Company
Manager, Product Safety
P.O. Box 3299
Englewood, CO 80155